

Isle of Wight
Learning Centre
01983 532769



POA Learning in Freshwater

From this month POA Learning will be taking part in the Our Place sessions which are held at the West Wight Sports and Community Centre every Tuesday from 10am until 12:30pm. These are friendly and informal sessions where a variety of services are on offer. From sewing to Job seeking and we are happy to add the full range of POA Learning to this session.



We are also taking part in the new Our Place session which works in a similar vein but is being set up to support families and younger people. This session will be also be held at the sports centre and will take place every Thursday afternoon from 3pm until 5.

Contact Details

Dave Logan - Regional Centre Manager

Sandra Trigg - Learner Support

Jan Hookey - Apprenticeship Support

Tel: 01983 532769 Email: isleofwight@poalearning.org.

Isle of Wight
Learning Centre
01983 532769



September Newsletter Springboard Sessions

The drop in Springboard sessions are running through the summer. No appointment is necessary just come in and tell us what you would like to learn and we will take it from there. Functional Skills Maths, English and Computing are available for free as well as the range of vocational packs, employability skills and assistance online with such systems as Universal Credit and Find A Job. These are informal sessions which we like to keep very relaxed. The **Springboard** drop in sessions for English, Maths, ICT and Employability Skills can be found on every.....

Tuesday from 9:30am—12 noon at Aspire on Dover Street in Ryde (PO33 2BN)

Tuesday 1pm—4pm at Ventnor Town Council, Salisbury Gardens in Dudley Road (PO38 1EJ)

Tuesday 10am-12:30pm & Thursday 3pm till 5pm at Freshwater Community Sports Centre

Thursday 09:30—12:00 at St Margaret's Hall in Upper Ventnor on Lowtherville Road. (PO38 1BJ)

Friday 9:00—16:00 at the Downside Community Centre on Pan, Newport. (PO30 2AX)

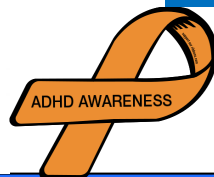
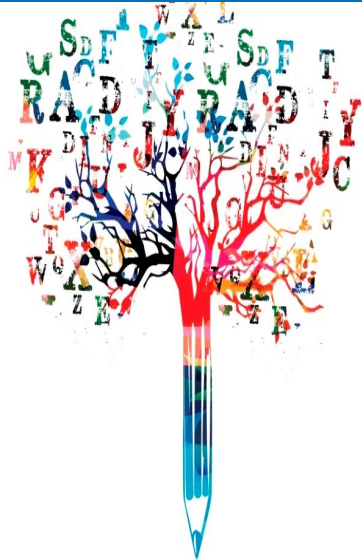
Isle of Wight
Learning Centre
01983 532769



Creative Writing with POA Learning

POA Learning are happy to announce that we now have a new fun group session available to all free of charge. Our Creative Writing session is a short informal session

which aims to teach the basics of developing a character and involving these characters in a story line. The session is designed to last for an hour and is ideal for groups of about eight to 10 people.



Isle of Wight
Learning Centre
01983 532769



The following fully accredited Level 2 courses are currently available FREE of charge to learners aged 19 and over who have lived in the EU for the past 3 years. Please note that learners aged 19-24 are required to have an existing Level 2 qualification.

- Level 2 Certificate in the Principles of Dementia Care
- Level 2 Certificate in Awareness of Mental Health Problems
- Level 2 Certificate in Understanding Working with People with Mental Health Needs
- Level 2 Certificate in Preparing to Work in Adult Social Care
- Level 2 Certificate in Team Leading Knowledge
- Level 2 Certificate in Understanding the Safe Handling of Medicines
- Level 2 Certificate in Understanding Nutrition and Health
- Level 2 Certificate in the Principles of Working with Individuals with Learning Disabilities
- Level 2 Principles of the Prevention and Control of Infection in Health Care Settings
- Level 2 Certificate in Understanding the Care and Management of Diabetes
- Level 2 Certificate in Principles of End of Life Care
- Level 2 Certificate in the Principles of Business Administration
- Level 2 Certificate in Customer Service Knowledge
- Level 2 Certificate in Information, Advice or Guidance
- Level 2 Certificate in Equality and Diversity
- Level 2 Common Health Conditions
- Level 2 Dignity in Care and Safeguarding
- Level 2 Autism Awareness
- Level 2 Counselling
- Level 2 Introducing Caring for Children and Young People
- Level 2 Understanding Children and Young Peoples Mental Health
- Level 2 Behaviour that Challenges Children (Online only)
- Level 2 Certificate in Essential IT Skills (Online only)